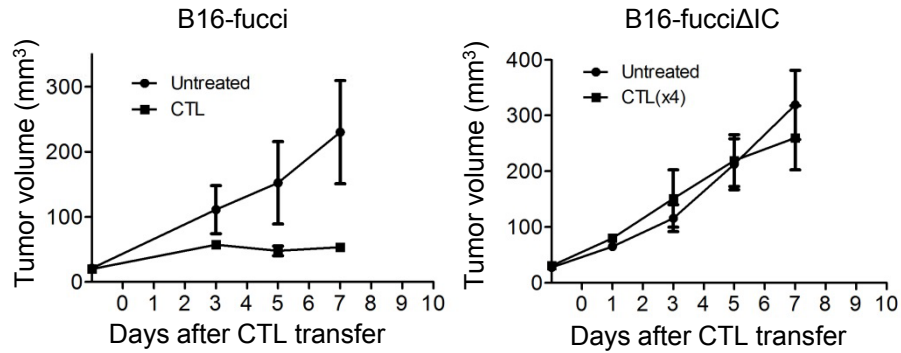
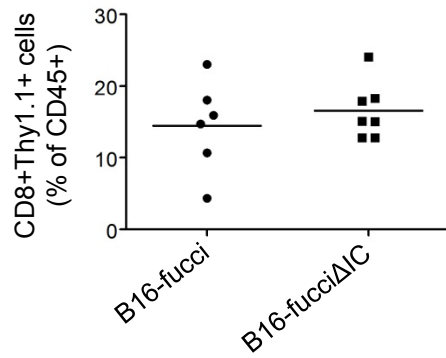


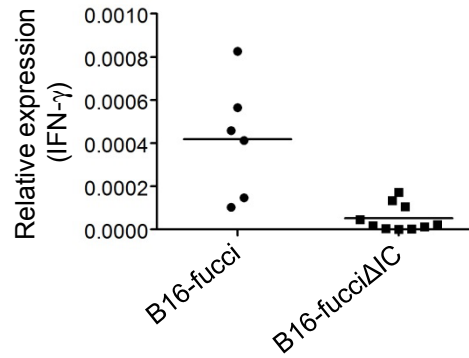
A



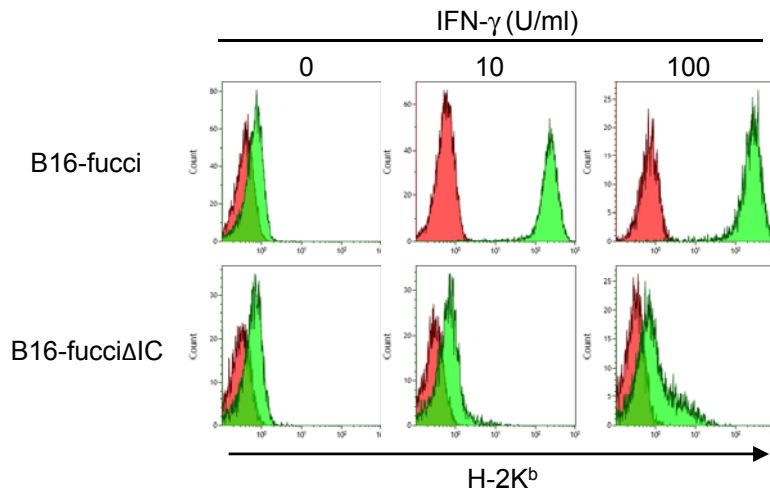
B



C



D



Supplementary Figure S2. Adoptive CTL transfer therapy in B16-fucciΔIC tumor-bearing mice. (A) B16-fucci (left) or B16-fucciΔIC (right) tumor cells were injected into C57BL/6 mice and 9 days later (day 0), tumor-bearing mice received 1×10^7 (left) or 4×10^7 (right) CD90.1⁺ CTLs. Tumor volumes were measured on days 1, 3, 5, and 7 after CTL transfer (n=5). (B) The frequency of CTL (CD45⁺ CD90.1⁺ CD8⁺) was determined by flow cytometry. (C) Tumors were harvested on day 3 after CTL transfer from each group. Expression of *IFN-γ* mRNA was determined by quantitative real-time RT-PCR. GAPDH mRNA was used as an internal control. (D) Expression of H-2K^b was examined in B16-fucci or B16-fucciΔIC left untreated or treated with IFN-γ (10 or 100 U/ml) for 2 days.