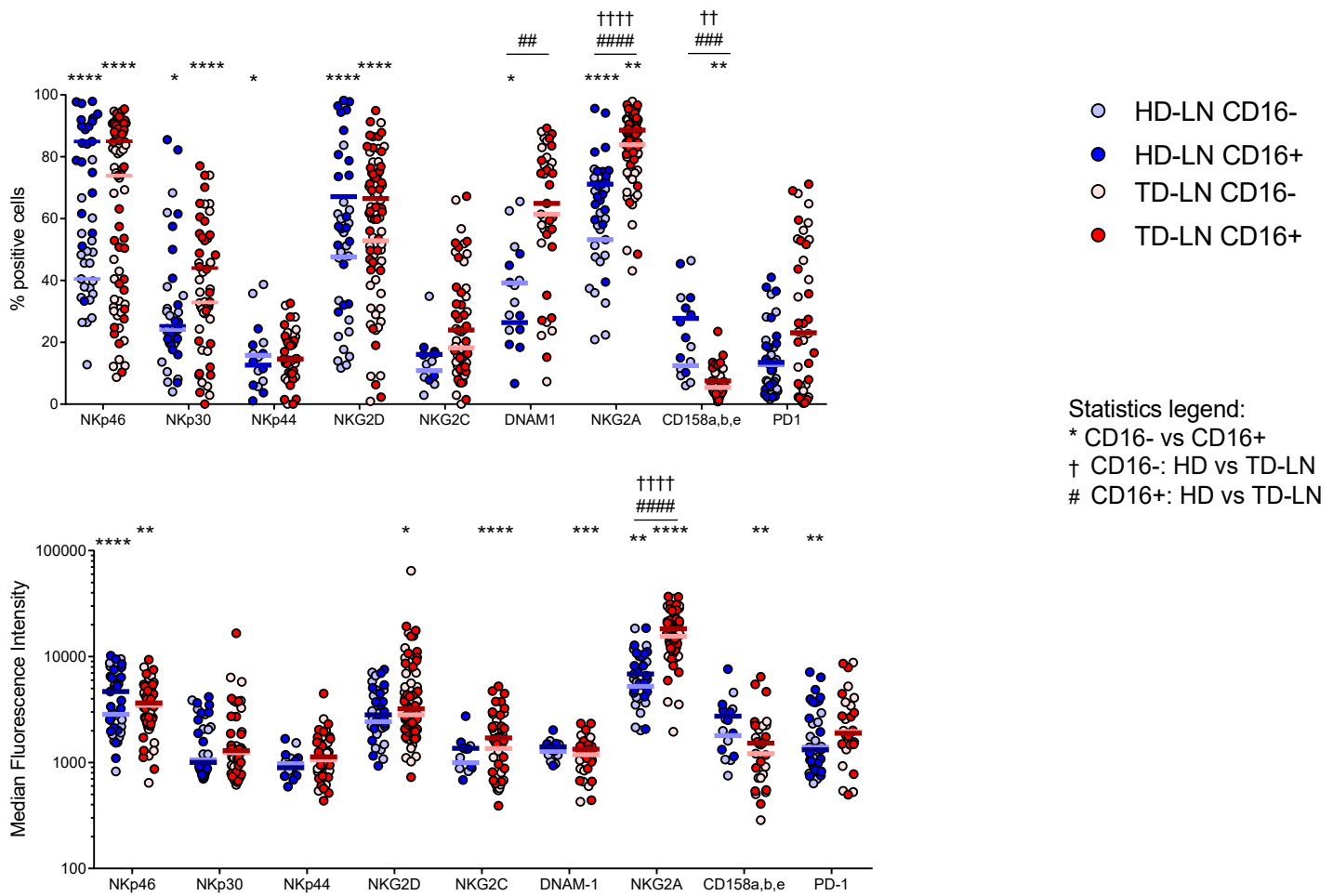
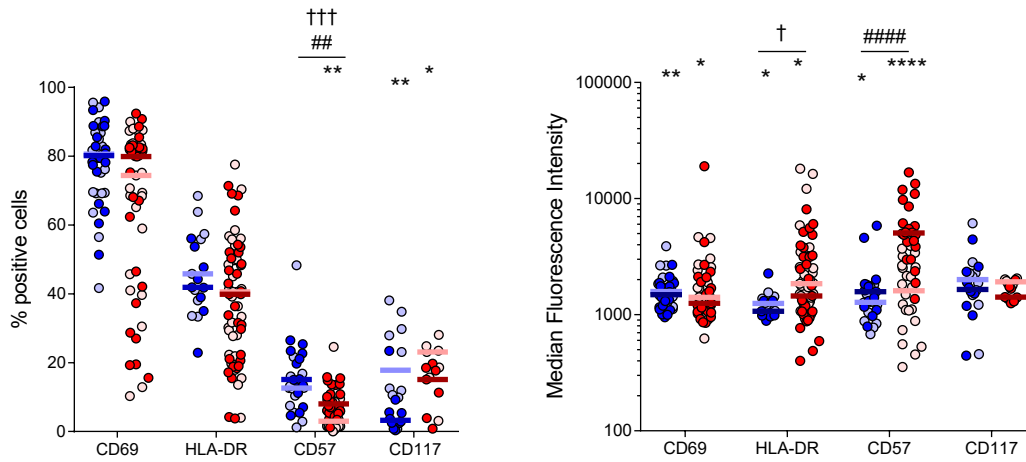
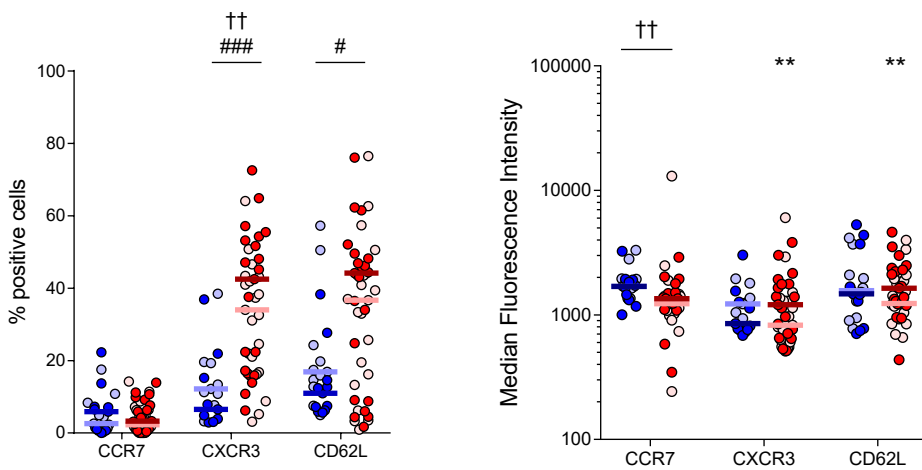


**A****B****C**

### Supplementary Figure 4: Phenotype of CD16- and CD16+ LN-NK cells subsets

Expression (% and MFI values) by HD-LNs and TD-LNs of NK receptors (A), activation markers (B) and chemokine receptors (C). Wilcoxon test was used to compare paired CD16- and CD16+ subsets and Mann-Whitney test was used to compare donors to patients' phenotype. \*  $p < 0.05$ , \*\*  $p < 0.01$ , \*\*\*  $p < 0.001$ , \*\*\*\*  $p < 0.0001$